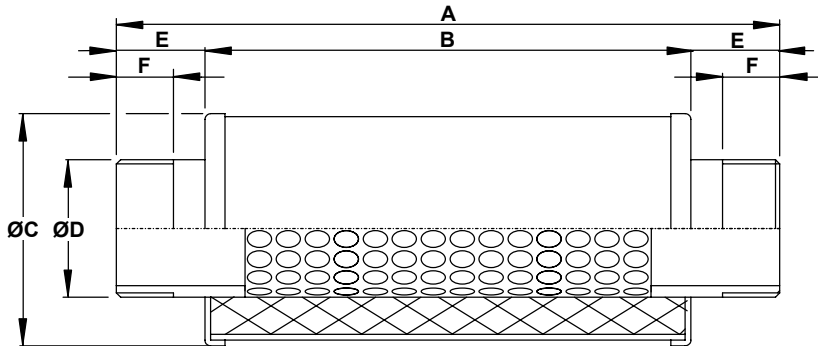




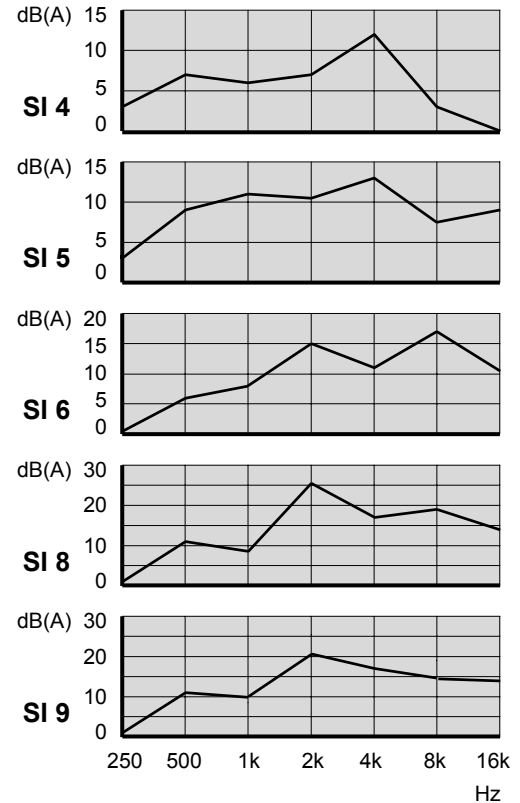
SI - INLINE SILENCER

Inline silencer assembly with GAS threaded sleeves at both ends.



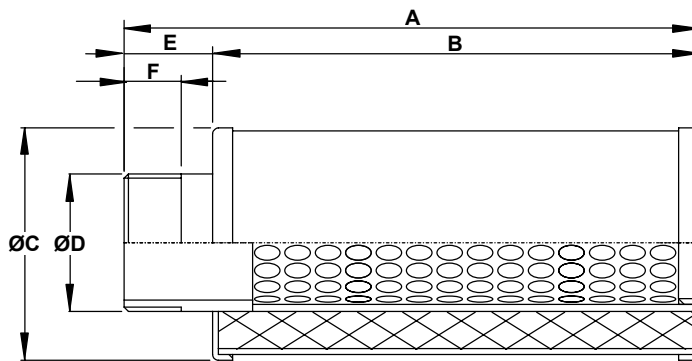
| TYPE | D | A | B | C | E | F | Kg |
|------|----------|-----|-----|-----|----|----|-----|
| SI 4 | G 1" 1/4 | 240 | 140 | 70 | 50 | 15 | 0.5 |
| SI 5 | G 1" 1/2 | 230 | 170 | 80 | 30 | 20 | 0.6 |
| SI 6 | G 2" | 260 | 200 | 90 | 30 | 20 | 0.7 |
| SI 8 | G 3" | 570 | 400 | 152 | 85 | 20 | 2.5 |
| SI 9 | G 4" | 485 | 415 | 168 | 27 | 20 | 3.6 |

SOUND DEADENING AVERAGE INDICATIVE VALUES



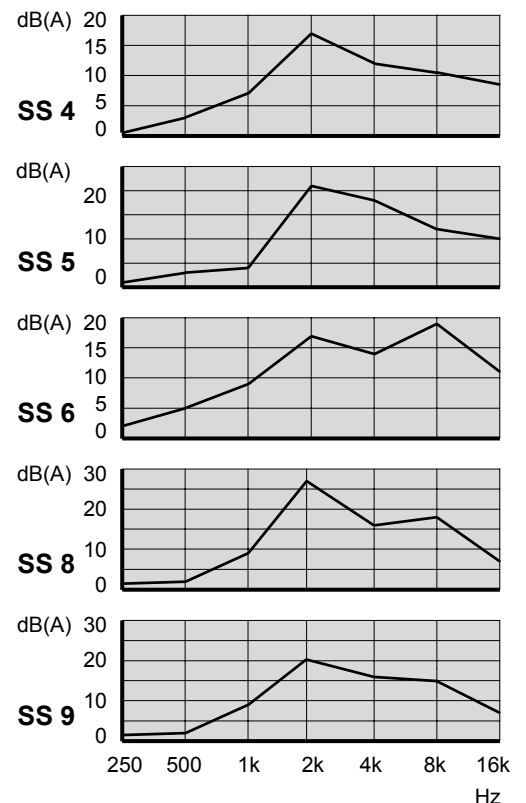
SS - END MOUNTING SILENCER

End mounting silencer with GAS threaded sleeve at one end and protective net at opposite end.



| TYPE | D | A | B | C | E | F | Kg |
|------|----------|-----|-----|-----|----|----|-----|
| SS 4 | G 1" 1/4 | 190 | 140 | 70 | 50 | 15 | 0.3 |
| SS 5 | G 1" 1/2 | 200 | 170 | 80 | 30 | 20 | 0.4 |
| SS 6 | G 2" | 230 | 200 | 90 | 30 | 20 | 0.5 |
| SS 8 | G 3" | 485 | 400 | 152 | 85 | 20 | 1.8 |
| SS 9 | G 4" | 465 | 430 | 169 | 27 | 20 | 3.7 |

SOUND DEADENING AVERAGE INDICATIVE VALUES



Steel manufactured (apart from SI 9 / SS 9 - entirely in aluminium) with sound absorbing polyuretane element, the noise is reduced by adsorption.

Dimensions in mm. Tolerance on given values $\pm 10\%$ - unbinding and can be changed without prior notice.